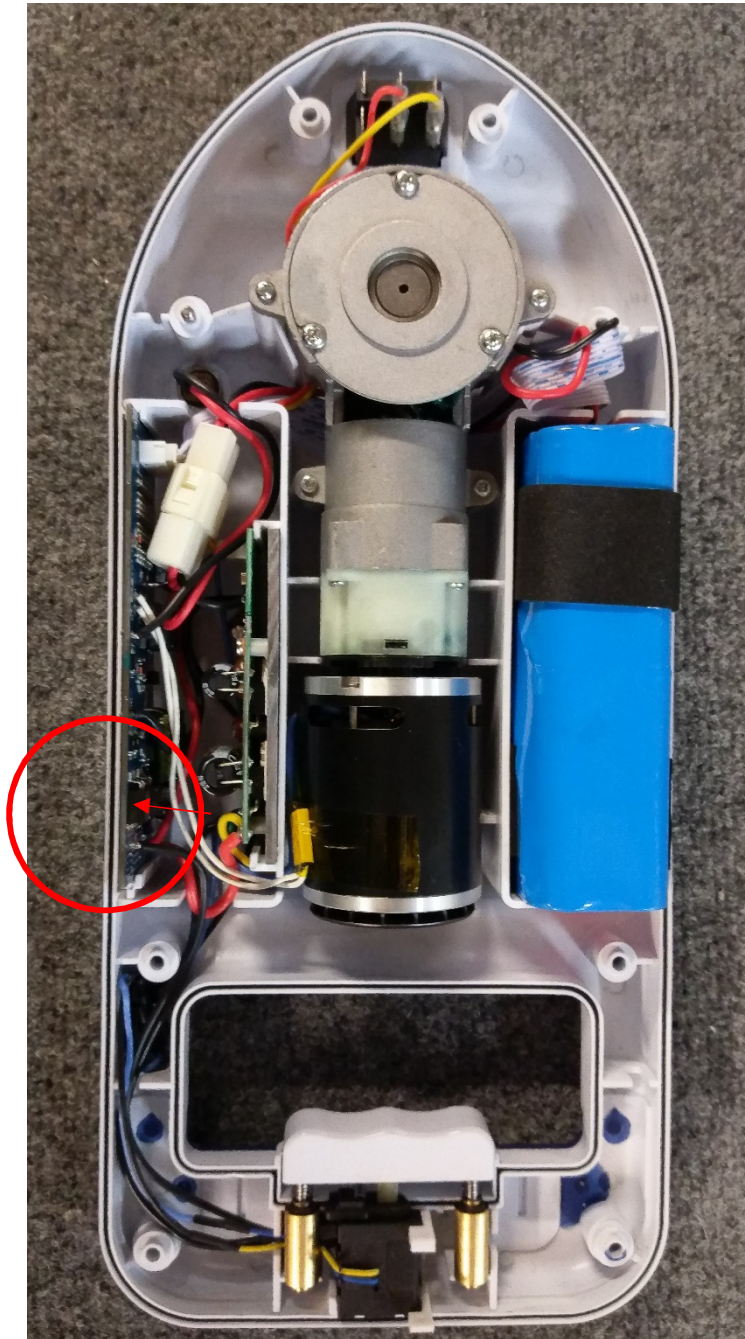
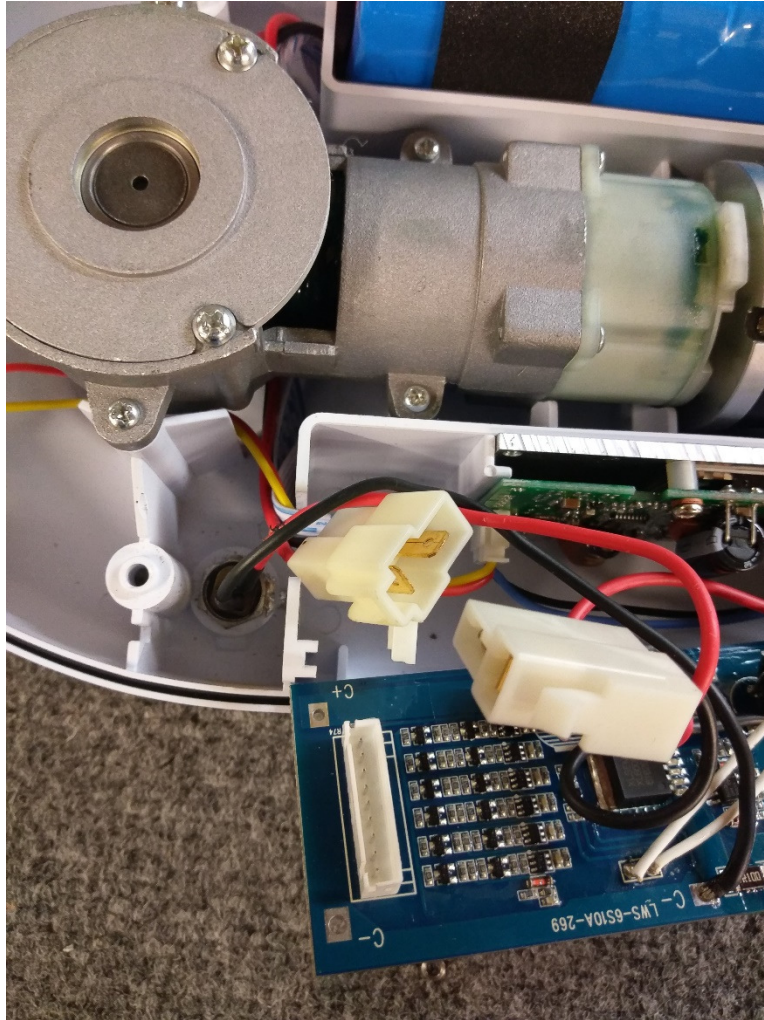


WinchRite brushless model short cycle solution:

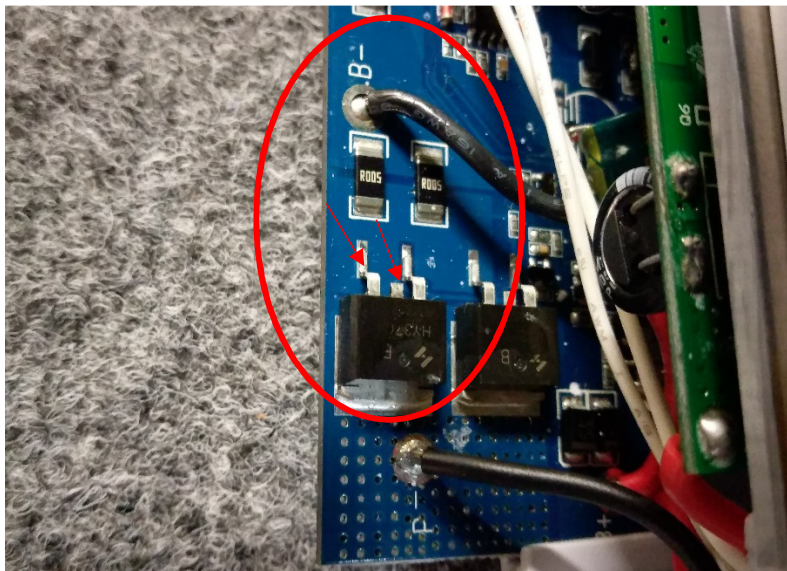
1-Locate PSR component on outer edge of circuit board.



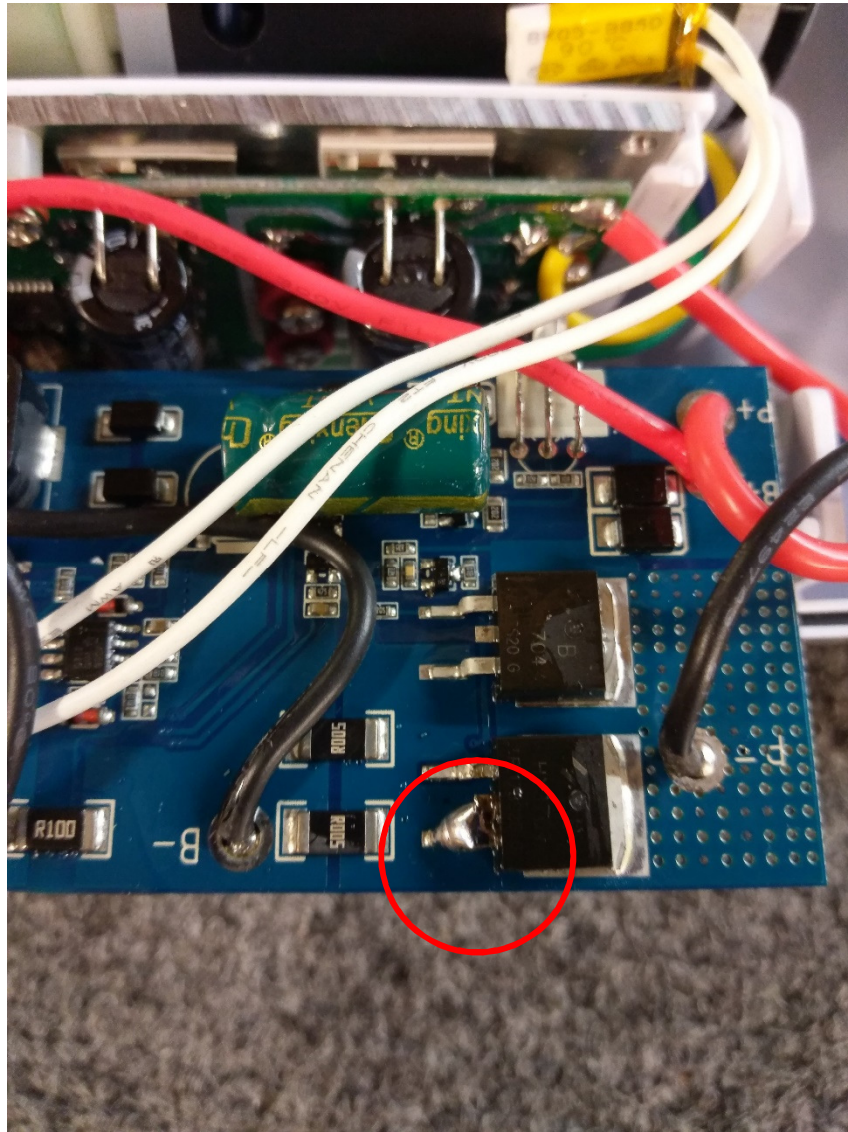
2- Unplug the two battery connectors:



3-Locate outer prong and unused center short prong on the PSR component.



4- Solder a bridge between these two prongs:



5- Put battery plugs back together, make sure all wires are clear of any pinch points. Reassemble the two case housings.